

FRANK SCOTT PARKWAY EAST

BENCHMARK CENTRE

STONE MONUMENT

7,250 S.F.

Roth Companies  
7,250 S.F.

DR. WIRTH/ASSOCIATED  
PEDIATRIC DENTISTRY  
6,500 S.F.

Labue Chiropractic  
Dr. Nisar Osteology  
7,200 S.F.

END PHASE 1  
CONSTRUCTION

LARGE TREE

10 50'  
13,225 S.F.

STORAGE

PHASE 1

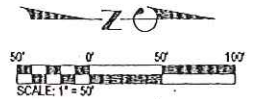
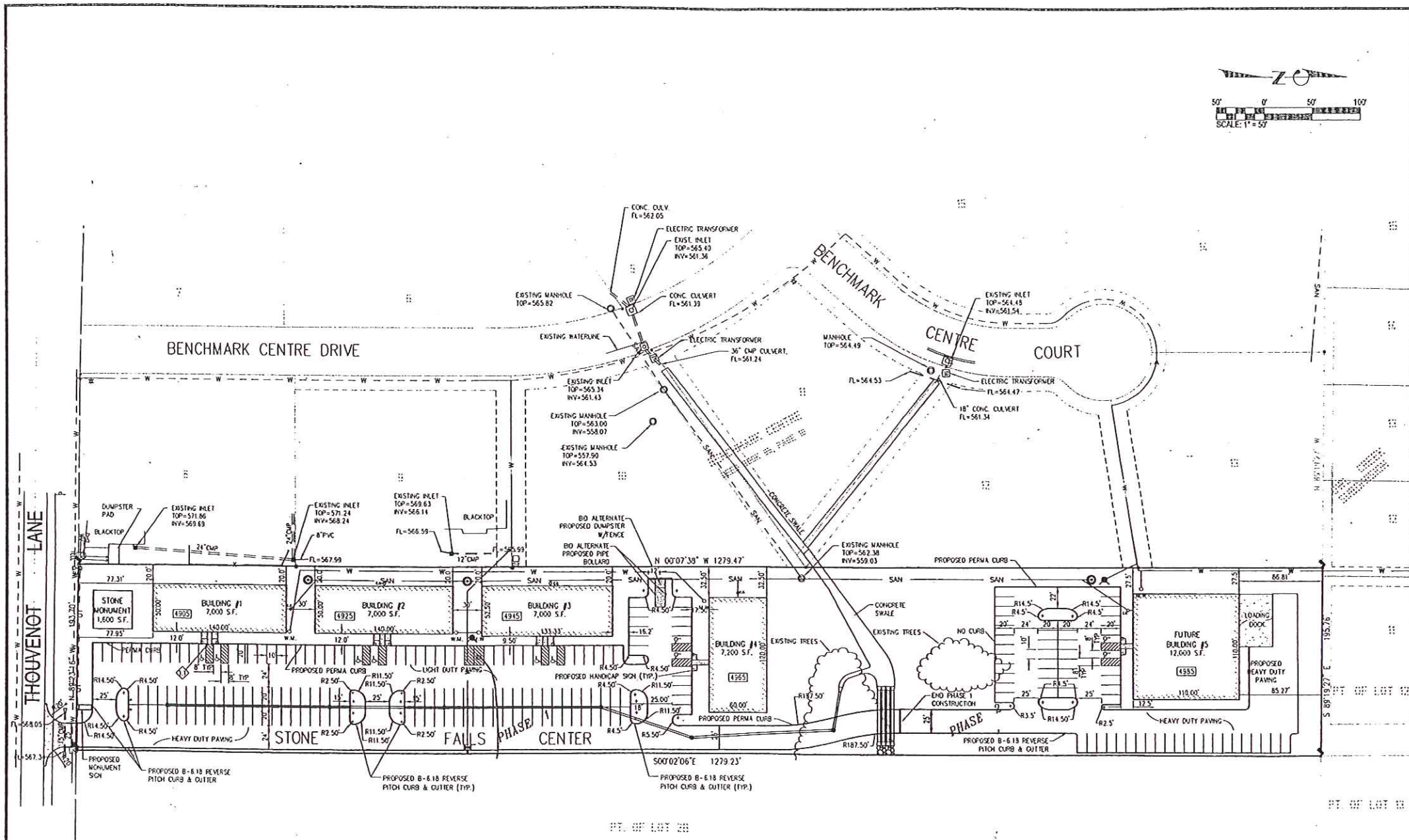
PHASE 2

PROPOSED SITE PLAN NOTES:  
BUILDINGS 1-4  
BUILDING SQ. FOOTAGE = 28,200 S.F.  
LOT ACREAGE = 159,037 S.F.  
HANDICAP SPACES = 8  
PARKING SPACES = 150  
PARKING SPACE RATIO = 5.6 SPACES/1,000 S.F.

PROPOSED SITE PLAN NOTES:  
BUILDING 5:  
BUILDING SQ. FOOTAGE = 13,225 S.F.  
LOT ACREAGE = 90,071 S.F.  
HANDICAP SPACES = 4  
PARKING SPACES = 76  
PARKING SPACE RATIO = 6 SPACES/1,000 S.F.

# STONE FALLS CENTER

Exhibit A



**THOUVENOT, WADE & MOERCHEN, INC.**  
ENGINEERS • SURVEYORS • PLANNERS



**CORPORATE OFFICE**  
4910 OLD COLLINSVILLE RD.  
SWANSEA, ILLINOIS 62226  
TEL (618) 624-4488  
FAX (618) 624-6688  
corp@twm-inc.com

**WATERLOO OFFICE**  
118 EAST THIRD STREET  
WATERLOO, ILLINOIS 62298  
TEL (618) 939-5050  
FAX (618) 939-3938  
twm@hlc.net

**ST. LOUIS OFFICE**  
1001 CRAIG ROAD, SUITE 260  
ST. LOUIS, MISSOURI 63146  
TEL (314) 236-5052  
FAX (314) 872-2194  
stlouis@twm-inc.com

**PROFESSIONAL REGISTRATIONS**

ILLINOIS PROFESSIONAL DESIGN FIRM	154-001278
PROFESSIONAL ENGINEERING CORP.	62-00379
PROFESSIONAL STRUCTURAL ENGR. CORP.	81-002492
ILLINOIS PROF. LAND SURVEYING CORP.	648-000228
MISSOURI PROFESSIONAL ENGR. CORP.	NC 061528
MISSOURI LAND SURVEYING CORP.	NC 003346

**STATEMENT OF RESPONSIBILITY**  
I hereby confirm that the document herein to be authorized by my seal is restricted to this sheet, and I hereby disclaim any responsibility for all other drawings, specifications, estimates, reports or other documents or instruments relating to or intended to be utilized for any other part of the architectural, engineering or survey project.

**PROPOSED SITE PLAN NOTES:**  
BUILDING SQ FOOTAGE = 40,200 SF.  
LOT ACREAGE = 249,107 SF.  
HANDICAP SPACES = 10  
PARKING SPACES = 221  
PARKING SPACE RATIO = 5.50 SPACES/1,000 SF.  
CONTRACTOR TO TAPER CURB FROM 6" TO 0" AT HANDICAP PARKING SPACES

**PROPOSED SITE PLAN**

PROJECT: **STONE FALLS CENTER VILLAGE OF SWANSEA ST. CLAIR COUNTY, ILLINOIS**

REV.	DATE	DESCRIPTION

DRAWN BY:	REM	SHEET
DESIGNED BY:		4
DRAWN BY:		
APPROVED BY:		OF 10 SHEETS
PROJECT NUMBER:	001000699C	
<input checked="" type="checkbox"/> ISSUED FOR REVIEW	<input type="checkbox"/> ISSUED FOR BIDDING	
<input type="checkbox"/> ISSUED FOR CONSTR.	<input type="checkbox"/> RECORD DRAWING	





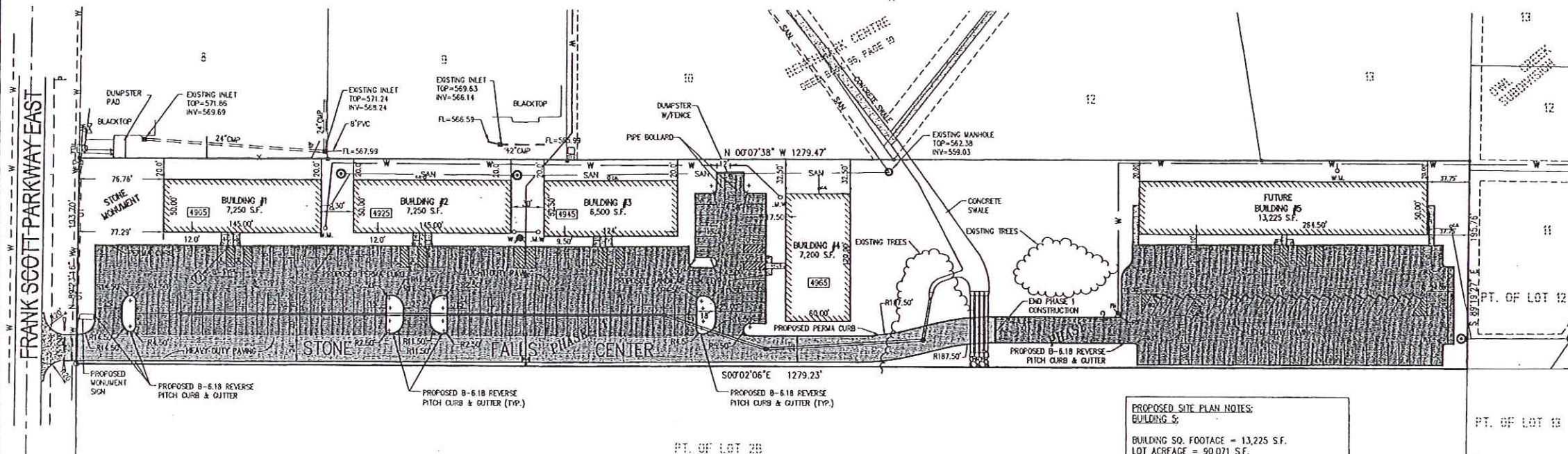
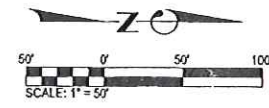
☑ **CORPORATE OFFICE**  
4940 OLD COLLINSVILLE RD.  
SWANSEA, ILLINOIS 62226  
TEL (618) 624-4488  
FAX (618) 624-6688  
corp@twm-inc.com

☐ **WATERLOO OFFICE**  
118 EAST THIRD STREET  
WATERLOO, ILLINOIS 62298  
TEL (618) 939-5050  
FAX (618) 939-3938  
twm@htc.net

☐ **ST. LOUIS OFFICE**  
1001 CRAG ROAD, SUITE 260  
ST. LOUIS, MISSOURI 63146  
TEL (314) 236-5052  
FAX (314) 872-2194  
stlouis@twm-inc.com

PROFESSIONAL REGISTRATIONS	LICENSE NO.
ILLINOIS PROFESSIONAL DESIGNER	184-001220
PROFESSIONAL ENGINEERING CORP.	02-03070
PROFESSIONAL STRUCTURAL ENGINEER CORP.	11-000202
ILLINOIS PROF. LAND SURVEYING CORP.	048-000029
MISSOURI PROFESSIONAL DESIGNER CORP.	NC 001528
MISSOURI LAND SURVEYING CORP.	NC 000344

Forward Date:  
Signature Date:  
**STATEMENT OF RESPONSIBILITY**  
I hereby confirm that the document herein is the authorized by my seal is restricted to this sheet, and I hereby assume only responsibility for all other drawings, specifications, estimates, reports or other documents or instruments relating hereto or intended to be utilized for any other part of the architectural, engineering or survey project.



**PROPOSED SITE PLAN NOTES:**  
**BUILDINGS 1-4**  
BUILDING SQ. FOOTAGE = 28,200 S.F.  
LOT ACREAGE = 159,037 S.F.  
HANDICAP SPACES = 8  
PARKING SPACES = 150  
PARKING SPACE RATIO = 5.6 SPACES/1,000 S.F.  
◊ CONTRACTOR TO TAPER CURB FROM 6" TO 0" AT HANDICAP PARKING SPACES

HEAVY DUTY PAVING  
 LIGHT DUTY PAVING

**PROPOSED SITE PLAN NOTES:**  
**BUILDING 5:**  
BUILDING SQ. FOOTAGE = 13,225 S.F.  
LOT ACREAGE = 90,071 S.F.  
HANDICAP SPACES = 4  
PARKING SPACES = 74  
PARKING SPACE RATIO = 5.9 SPACES/1,000 S.F.  
◊ CONTRACTOR TO TAPER CURB FROM 6" TO 0" AT HANDICAP PARKING SPACES

TITLE: **PROPOSED SITE PLAN**  
PROJECT: **STONE FALLS CENTER VILLAGE OF SWANSEA ST. CLAIR COUNTY, ILLINOIS**

REV	DATE	DESCRIPTION
1	3/11/2004 10:17am	

DESIGNED BY	REV	SHEET
		4b
PROJECT NUMBER: D010005930		OF 10 SHEETS